



Foundations of Woods Virtual Learning

One Trade Many Careers

Chapter 6

May 12, 2020

Foundations of Woods

Lesson: May 12, 2020

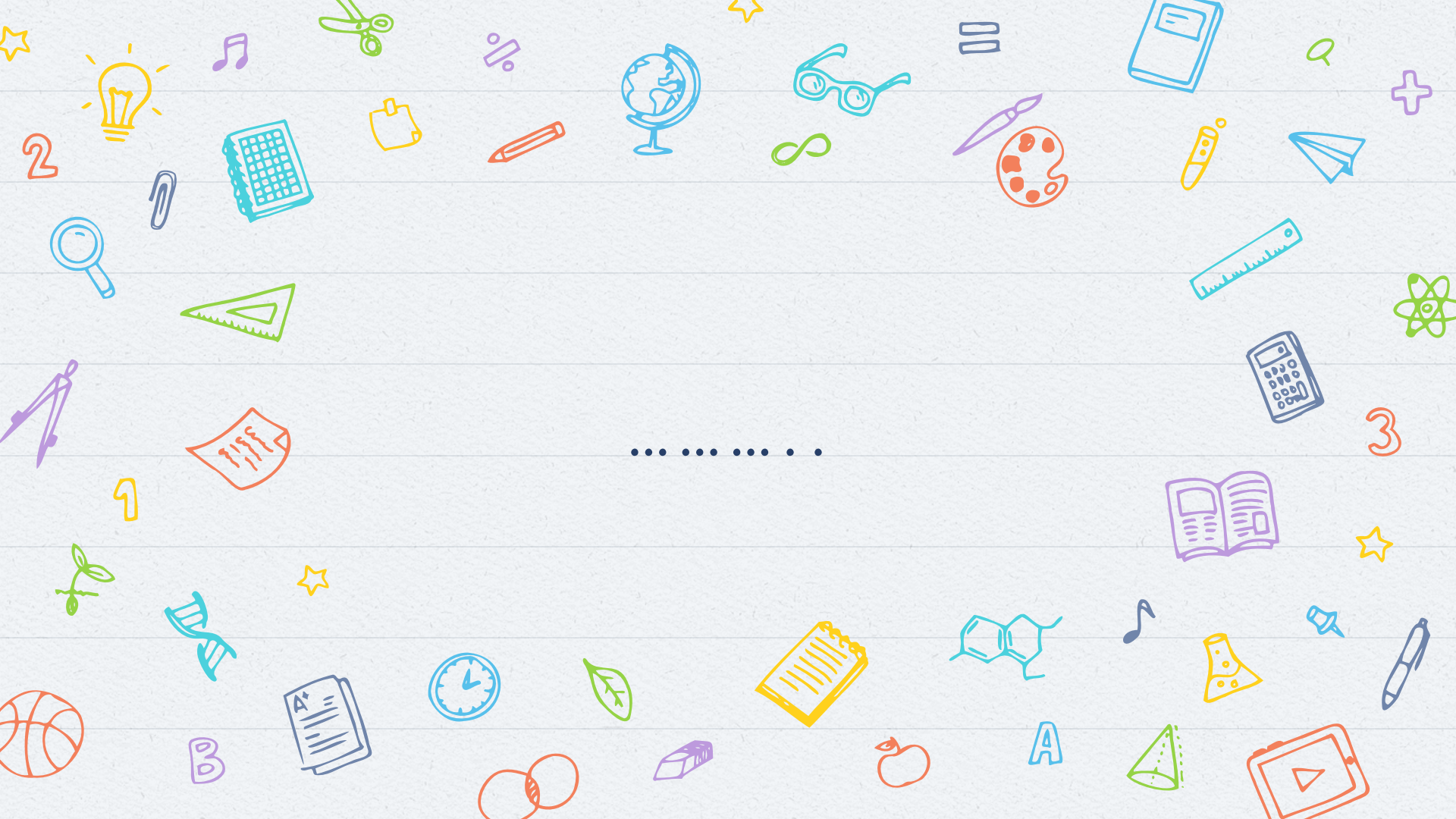
Objective/Learning Target:

*Check depth of knowledge with the quiz provided.

IF YOU USE EXOTIC WOODS AND VENEERS TO BUILD OBJECTS, WHICH OCCUPATION ARE YOU MOST LIKELY TO HAVE?

- commercial carpenter
- mill-cabinetmaker
- interior systems carpenter
- residential carpenter





ANSWER: mill-cabinetmaker

IF YOUR JOB IS TO INSTALL ACOUSTICAL CEILINGS IN AN OFFICE BUILDING, WHICH OCCUPATION ARE YOU MOST LIKELY TO HAVE?

- commercial carpenter
- mill-cabinetmaker
- interior systems carpenter
- residential carpenter



ANSWER: interior
systems carpenter

WHICH TYPE OF TRADES PERSON FREQUENTLY WORKS FROM SCAFFOLDING AT GREAT HEIGHTS?

- commercial carpenter
- mill-cabinetmaker
- interior systems carpenter
- residential carpenter





.....

ANSWER: commercial
carpenter

WHICH TYPES OF TRADES PERSON TYPICALLY WORKS WITH PREFABRICATED PRODUCTS THAT HAVE BEEN MANUFACTURED FOR SPECIFIC PURPOSES?

- commercial carpenter
- mill-cabinetmaker
- interior systems carpenter
- residential carpenter





ANSWER: interior systems
carpenter

EVERY CARPENTER MUST BE ABLE TO READ _____, WHICH ARE CREATED BY AN ARCHITECT OR DESIGNER AND SHOW THE LOOK AND FUNCTION OF A FINISHED PRODUCT.

- road signs
- prints
- small print
- none of the above





ANSWER: prints

ALL CARPENTERS MUST WEAR _____ GEAR,
INCLUDING A HARDHAT AND WORK BOOTS.

- protective or safety
- racing
- special
- fluorescent





.....

ANSWER: protective or safety

A(N) _____ CARPENTER IS MORE LIKELY THAN
OTHER CARPENTERS TO WORK AROUND HEAVY EQUIPMENT SUCH AS
CRANES.

- experienced
- commercial
- residential
- journeyman





.....

ANSWER: commercial



ANSWER: FALSE

INTERIOR SYSTEMS CARPENTERS WORK ON THE SAME PROJECTS AS BOTH
COMMERCIAL AND RESIDENTIAL CARPENTERS.

True or False?



ANSWER: TRUE

MILL-CABINETMAKERS CREATE PRODUCTS FOR RESIDENTIAL, NOT
COMMERCIAL STRUCTURES.

True or False?





.....

ANSWER: FALSE